

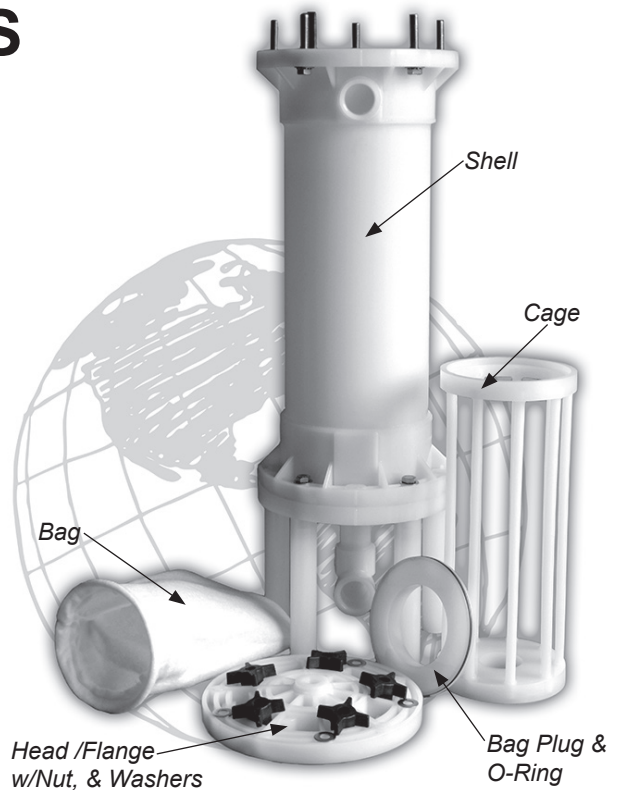
PENGUIN

Installation & Maintenance

BAG FILTER CHAMBERS SERIES CBK

Models	Materials
8CBK-10	A - CPVC
8CBK-15	B - Polypropylene
	C - PVDF

Penguin CBK bag filter chambers were designed to handle a broad array of chemistry and temperatures without difficulty. The chambers are constructed with high quality and durable CPVC, un-pigmented Polypropylene or PVDF and choice of EPR or Viton elastomers. No metal contact with solution. CBK's unique long sleeve flanges with heavy reinforced ribbing of molded parts along with the double labyrinth O-ring assures proper sealing. PVDF materials can withstand temperatures up to 250°F and pressures to 80 psi at ambient temperatures.



Installation

Plumbing

CBK bag filter design incorporates side in entry and bottom center discharge. Inlet and outlet ports are 1.5" MNPT. These chambers are also available in flange connections. No overhead piping required as the side entry port allows the chamber cover to be removed without disengaging the piping. Therefore, allowing easy access to the filter bag.

Scheduling bag replacement is entirely empirical allowing individual work load and contaminant levels. Frequency of bag replacement becomes easy after a couple of filtrations cycles have been achieved and as expected dirt load can be determined. Type of solution, duration and frequency of operation, filter porosity as well as particle size can be factored in determining the media and chamber size.

Bag replacement is achieved by turning off the system, bleed the pressure in the chamber via the vent port. Drain the chamber from the discharge port into appropriate container or drain.

Remove the chamber knob and washers. Lift off the cover.

Check integrity of O-rings and determine if required replacement

Remove bag holder plug. The plug may have resistance and need to be rocked back and forth.

Check O-ring

Lift out bag and support.

Remove bag.

Innovative Fluid Management Systems

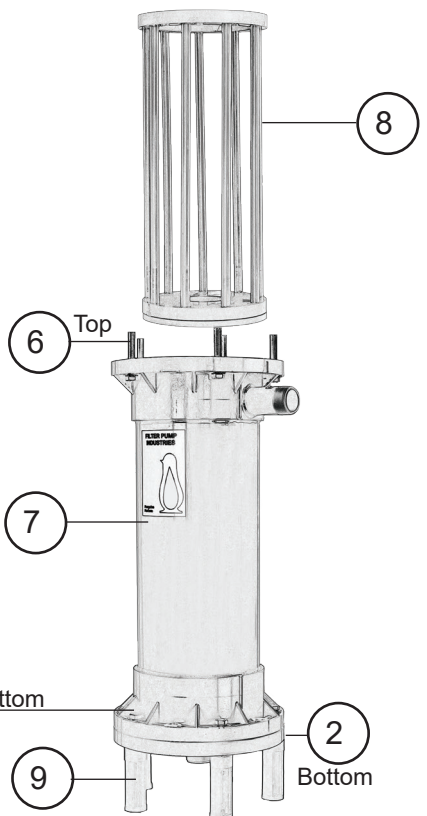
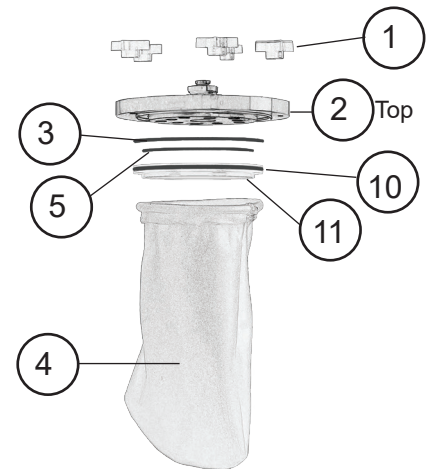
7932 Ajay Drive Sun Valley • CA 91352 U.S.A • Phone: 818-504-2391 • Fax: 818-768-7590 • Email: Info@filterpump.com

PENGUIN 
FILTER PUMP INDUSTRIES

Assembly

- Screw the 1/2-13 x 3" flange bolts with large flat washer into both the shell flange inserts. Tighten with 3/4" wrench. **DO NOT OVERTIGHTEN.**
- Press the #4 O-ring into the shell flange and seat evenly into the groove.
- Press #3 O-ring into head / flange bottom and seat evenly into groove.
- Place the shell flange on a flat surface with the side entry port down. Be careful not to drop the shell on the bolts causing damage.
- Place the head / flange over the shell flange bolts aligning the timing mark found on the outside edge of the flange.
- Fasten the flat washer and nut over the flange bolt and tighten diagonally using a 3/4" wrench. Tighten down approximately 15 psi.
Consider installing discharge piping at this time with proper orientation
- Place the chamber legs over the flange nut bolt assembly with the recess covering the nut. Do not use any tools to install the legs. Hand tight only.
- Place chamber on end with legs down.
- Place filter bag into bag support.
- Place bag assembly into the chamber resting on the inner shoulder.
- Install O-ring to groove of bag hold down plug evenly and smoothly into groove.
- Place the bag holder plug into and on top of the filter bag until seated flat and even. If you encounter resistance wet the O-ring with water.
- Press #4 O-ring into the shell flange and seat evenly into the groove.
- Press #3 O-ring into the Head / Flange and seat evenly into the groove.
- Place Head / Flange over shell flange bolts. No need to align with timing mark.
- Fasten large flat washer and knob over the shell flange bolts and tighten in crossing pattern until firmly secure. DO NOT USE TOOLS. Knob wrench is available.
- Install bleed valve or vent plug into Head / Flange.

A-CPVC
B-POLYPRO
C-PVDF
D-PVC
E-EPR
V-VITON



ALWAYS FILL CHAMBER VERY SLOWLY WITH VENT VALVE PLUG OPEN, ALLOWING AIR TO ESCAPE. ONCE FILLED CLOSE THE VENT VALVE / PLUG SECURELY.

BAG FILTER CHAMBER - Spare Parts List

Item	Description	8CB - Part Number	Qt'y Req'd
1	Knob & Washer	C-600-01	10
2A-TOP	Head - CPVC	C-800-02A-TOP	1
2A-BOT	Head - CPVC (1",1.5",2")	C-800-02A - BOT -1",1.5",2"	1
2B-TOP	Head- POLY	C-800-02B-TOP	1
2B-BOT	Head - POLY (1",1.5",2")	C-800-02B - BOT -1",1.5",2"	1
2C-TOP	Head - PVDF	C-800-02C-TOP	1
2C-BOT	Head - PVDF (1",1.5",2")	C-800-02C - BOT -1",1.5",2"	1
3	Head O-ring - ERP	C-800-03E-A	2
3	Head O-ring - ERP	C-800-03E-C	2
3	Head O-ring - Viton	C-800-03V-A	2
3	Head O-ring - Viton	C-800-03V-C	2
4	Filter Bag		1
5	Shell O-ring - EPR	C-800-04E-A	2
5	Shell O-ring - EPR	C-800-04E-C	2
5	Shell O-ring - Viton	C-800-04V-A	2
5	Shell O-ring - Viton	C-800-04V-C	2
6-TOP	Flange Bolt & Washer Ass'y	C-600-07 TOP	10
6-BOT	Flange Bolt & Washer Ass'y	C-600-07 BOT	10
7-1A	Shell Flange Assy. - CPVC 20"	CBK-800-08A-2	1
7-1B	Shell Flange Assy. - POLY 20"	CBK-800-08B-2	1
7-1C	Shell Flange Assy. - PVDF 20"	CBK-800-08C-2	1
7-2A	Shell Flange Assy. - CPVC 30"	CBK-800-08A-3	1
7-2B	Shell Flange Assy. - POLY 30"	CBK-800-08B-3	1
7-2C	Shell Flange Assy. - PVDF 30"	CBK-800-08C-3	1
8A	Bag Support Cage	CBK-800-10 A	1
8B	Bag Support Cage	CBK-800-10 B	1
8C	Bag Support Cage	CBK-800-10 C	1
9	Chamber Leg	C-600-14-D	10
10A	Bag Plug	CBK-800-11 A	1
10B	Bag Plug	CBK-800-11 B	1
10C	Bag Plug	CBK-800-11 C	1
11	Bag Plug O-Ring	CBK-800-12 E-A	1
11	Bag Plug O-Ring	CBK-800-12 E-C	1
11	Bag Plug O-Ring	CBK-800-12 V-A	1
11	Bag Plug O-Ring	CBK-800-12 V-C	1

A Division of Penguin Pumps Inc.
7932 Ajay Drive Sun Valley, CA 91352 U.S.A.
Office: 818-504-2391 • Fax: 818-768-7590

e-mail: info@filterpump.com • website: www.filterpump.com

PENGUIN
FILTER PUMP INDUSTRIES