

# PENGUIN

Installation & Maintenance

## BAG FILTER CHAMBERS SERIES CB

<b>Models</b>	<b>Materials</b>
6CB	A - CPVC
8CB	B - Polypropylene

Penguin filter chambers are designed to handle a large range of chemicals without difficulty. Completely constructed of CPVC and viton elastomers where in contact with the solution being filtered, there is no fragile lucite or glass. There is no metal to liquid contact. Because of the unique design with heavy reinforced ribbing in the molded parts, the double O-Ring labyrinth sealing, and the long-sleeved flanges attached to the chamber shell, these chambers can operate at higher temperatures and/or 100 psi at ambient temperatures.



### Installation

**Plumbing**  
Model 6CB/8CB filter chambers must be mounted vertically on the base legs with the outlet port at the bottom. The inlet and outlet ports are 6CB - 1" FPT, 8CB - 1 1/2" FPT. They can accept hose connections or standard pipe fittings if rigid piping is desired. If purchased as a separate unit or a complete filter system, 6CB/8CB filter chambers can be mounted singularly or base-mounted with pump on the floor. Polypropylene based-mounted filter systems include piping, valves, hose, fittings, clamps, and pressure gauge and guards.

### Operation

Each 6CB/8CB filter chamber is equipped with an initial 10 micron filter bag.

Following are filter bag dimensions:

Model	Diameter of Bag	Length of bag
6CB-6A	5	20"
6CB-9A	5	30"
6CB-6B	5	20"
6CB-9B	5	30"
8CB-10A	7	16"
8CB-15A	7	32"
8CB-10B	7	16"
8CB-15B	7	32"

There is no set timetable for filter bag replacement. The frequency of bag replacement varies based on type of solution, if continuous operation, filter bag micron porosity as well as particle size and distribution. Bag replacement is easily completed by removing split ring replacing new filter bag over adaptor head.



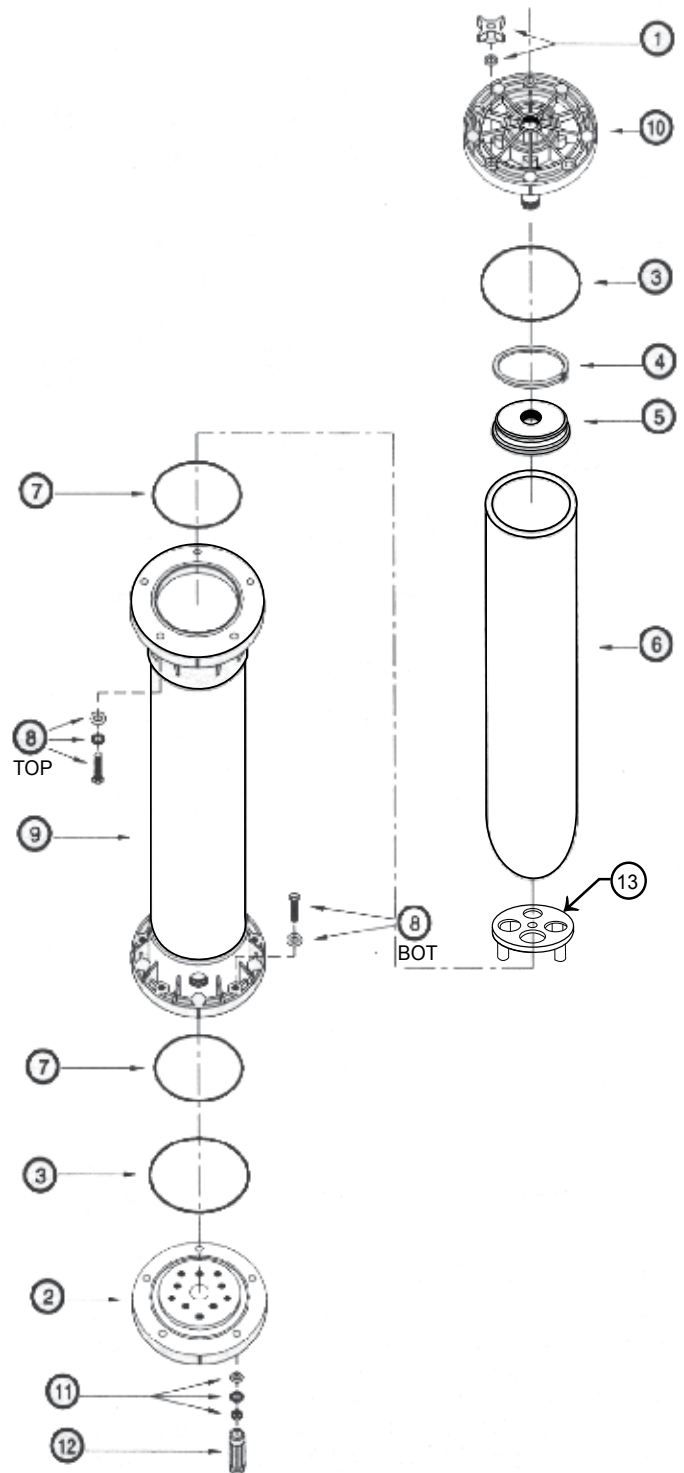
A Division of Penguin Pumps

7932 Ajay Drive Sun Valley • CA 91352 U.S.A • Phone: 818-504-2391 • Fax: 818-768-7590 • Email: [Info@filterpump.com](mailto:Info@filterpump.com)

# Assembly Instructions

## Assembly 6CB, 8CB

- 1) Screw the 10/10 1/2-13X3" hex head bolts with large Washers into both shell flanges where the metal inserts are exposed. Tighten the bolts using a 3/4" wrench. Do not overtighten.
- 2) Press two (2) of the #4 O-rings evenly into the grooves located on flanges. Press one (1) #3 O-ring evenly into the groove of the bottom flange.
- 3) Align the timing mark on the side of the bottom flange with the timing mark on the shell flange. Be sure the 1" 1/2" threaded side hole is at the bottom. Tighten the bottom flange onto the shell diagonally tightening the 5/5 large flat washers, lock washers, and nuts using a 3/4" wrench. The chamber legs have a recessed cavity on one side. Screw the 5/5 chamber legs with cavity over the 5/5 nuts, hand tighten only. Do not use any tools to tighten the legs.
- 4) Press the second #3 O-ring into the head groove. Position the chamber with the remaining 5/5 bolts at the top. Place the head over the bolts. Tighten the head down by using the 5/5 #1 washer and knobs. Alignment of the timing marks is not necessary.



### 6CB/8CB BAG FILTER CHAMBER Spare Parts List

Item	Description	Part Number		Quantity	
		6CB	8CB	6CB	8CB
1	Knob & Washer	C-600-01	C-600-01	5	5
2A-BOT	Head/Flange - CPVC - Bottom	C-600-02A BOT	C-800-02A BOT	1	1
2B-BOT	Head/Flange - POLY - Bottom	C-600-02B BOT	C-800-02B BOT	1	1
3E	Head O-ring EPR	C-600-03E	C-800-03E	2	2
3V	Head O-ring VITON	C-600-03V	C-800-03v	2	2
4A	Split Ring - CPVC	CB-600-04A	CB-800-04A	1	1
4B	Split Ring - POLY	CB-600-04B	CB-800-04B	1	1
5B	Adaptor Head - POLYPRO	BF-50-13B-1	CB-800-05B	1	1
6	Filter Bag	**	**	1	1
7E	Shell O-ring-EPR	C-600-04E	C-800-04E	2	2
7V	Shell O-ring-VITON	C-600-04V	C-800-04V	2	2
8-TOP	Flange Bolt & Washer Ass'y	C-600-07 TOP	C-600-07 TOP	10	10
8-BOT	Flange Bolt & Washer Ass'y	C-600-07 BOT	C-600-07 BOT	10	10
9A-1A	Shell - CPVC 20"	C-600-08A-2	C-800-08A-2	1	1
9A-1B	Shell - POLY 20"	C-600-08B-2	C-800-08B-2	1	1
9A-2A	Shell - CPVC 30"	C-600-08A-3	C-800-08A-3	1	1
9A-2B	Shell - POLY 30"	C-600-08B-3	C-800-08B-3	1	1
10A	Bag Chamber Head - CPVC	CB-600-10A	C-800-10A	1	1
10B	Bag Chamber Head - POLY	CB-600-10B	C-800-10B	1	1
11	Nut, Lock Washer & Washer Ass'y	C-600-14	C-600-14	5	5
12	Chamber Leg	C-600-14	C-600-14	5	5
13A	Flow Plate CPVC	CT-600-17A	CT-800-17A	1	1
13B	Flow Plate POLY	CT-600-17B	CT-800-17B	1	1

\*\* Consult Factory

Filter Pump Industries

7932 Ajay Drive • Sun Valley, CA 91352

Phone: (818) 504-2391 • Fax: (818) 768-7590

Internet: [www.filterpump.com](http://www.filterpump.com) • Email: [Info@filterpump.com](mailto:Info@filterpump.com)

